

# History of water transport in the collections of the STM - Museum of Transport Bratislava



Mgr. Martin Goduš  
STM-Transport Museum  
in Bratislava



# National cultural monument: Tugboat ŠTUREC

2013

– historical tugboat ŠTUREC in collections of the STM-Transport Museum in Bratislava



# First items after creation of separate Water Transport museum collection (2015)

Ship's bell from the motor ship ANDREJ HLINKA (1942)

Megaphone

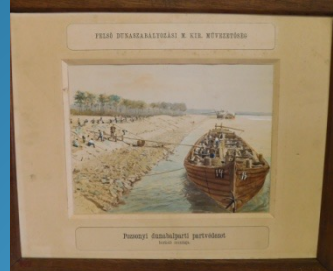
Kerosene lamp (blue illumination – transport of mineral oils)



# Water Management Collection

2016 – unique Water Management Collection stored in Slovak Technical Museum in Košice taken over by the STM – Transport Museum in Bratislava

- Paintings - modification of the banks of the Danube river,
- Dam models
- Oars used on the Danube on galleys



# Shipbuilding - Items made in Slovak shipyards in Komárno

2016 – Models of historical vessels

- Side-wheel motor tugboat SARATOV
- Bucket excavator KB 160/60



# Models of passenger ships OL 800 a OL 400

2016 – Models of passenger ships OL 800 a OL 400 built in Slovak shipyards in Komárno



# Model – Passenger speedboat Raketa

2016 – acquisition of the model of Raketa - passenger speedboat on carrier wings for the collection of the STM-Transport Museum in Bratislava



# Items from the cabin passenger ship DRUŽBA

- 2016 – ship bell
- steering wheel





# Model of steam tugboat LIPTOV

2016 – Model of steam side-wheel tugboat LIPTOV



# Harbour tugboat ZVOLEN

2018 / 2022 – Harbour tugboat ZVOLEN in collections of the STM-Transport Museum in Bratislava



# Pictures with the theme of water transport

- 2018 – Port in Bratislava, painting
- 2018 – Cargo ship, photo in frame
- 2018 – Passenger boat, photo in a frame
- 2020 – Bratislava Winter Port, painting
- 2022 – Tugboat JAVORINA, painting



# Six-bladed propeller from the Rocket-type passenger speedboat

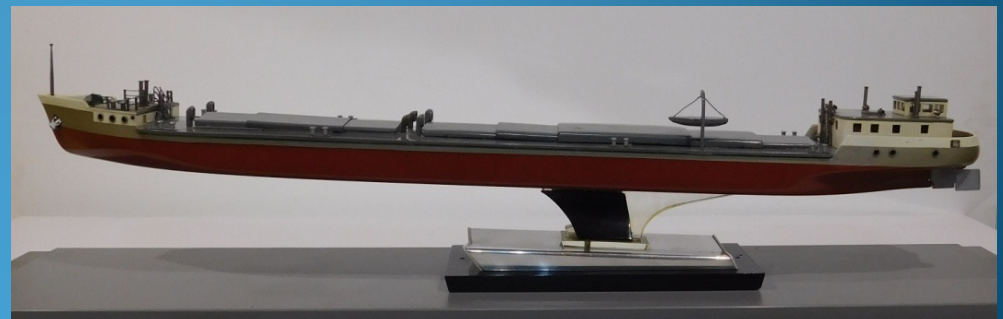
2018 – Six-bladed propeller from the passenger speedboat Raketa



# Models of ships - towing navigation

2018 – Documentation of towing navigation  
in the collections of the STM-Transport Museum

- Tugboat Kriváň and towed vessel UČ 1500



# Passenger speedboat METEOR V BRATISLAVA

2023 – passenger speedboat METEOR V BRATISLAVA as newest acquisition for the collection



Thank you for your attention!

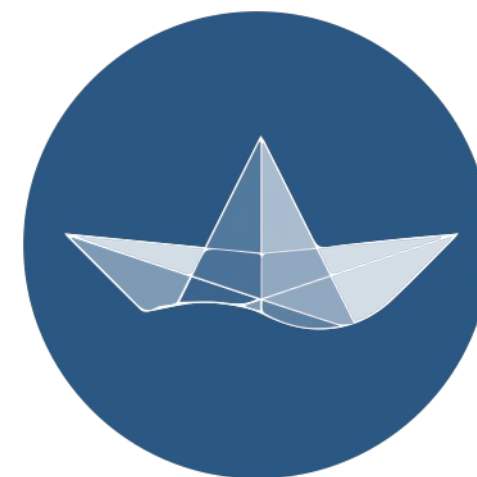




SLOVAK UNIVERSITY OF  
TECHNOLOGY IN BRATISLAVA  
FACULTY OF ARCHITECTURE AND DESIGN

# THE CONVERSION PROPOSAL OF SHIP WORKSHOP/HALL

TO THE MUSEUM OF WATER TRANSPORT



**Ing. arch. Ing. Martin Dubiny, PhD.**

**ENoRM meeting  
Basel, Switzerland  
3. 10. 2023**





AUSTRIA

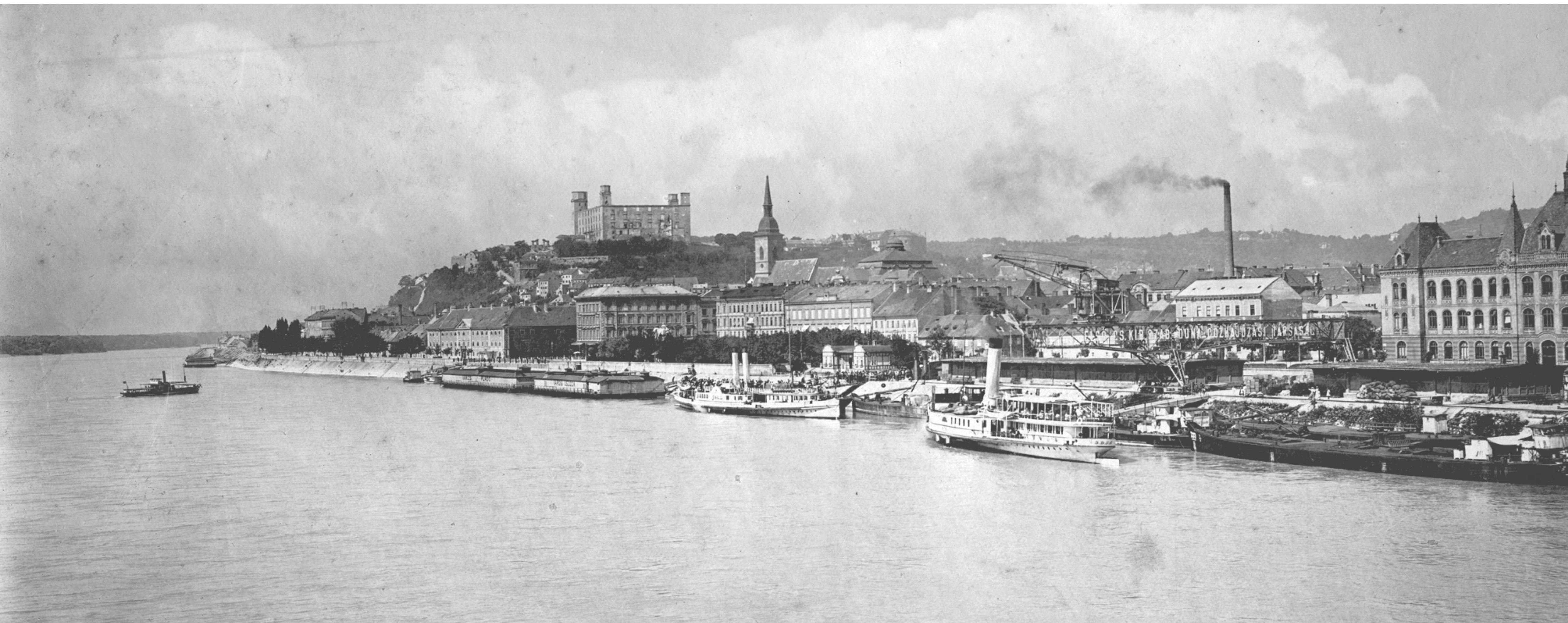
**BRATISLAVA**

SLOVAKIA

**KOMÁRNO**

**ŠTÚROVO**

HUNGARY



A panoramic view of the Bratislava embankment with the harbour from 1915 [source: online archive fortepan, photo ID 15676, donor Erky-Nagy Tibor]

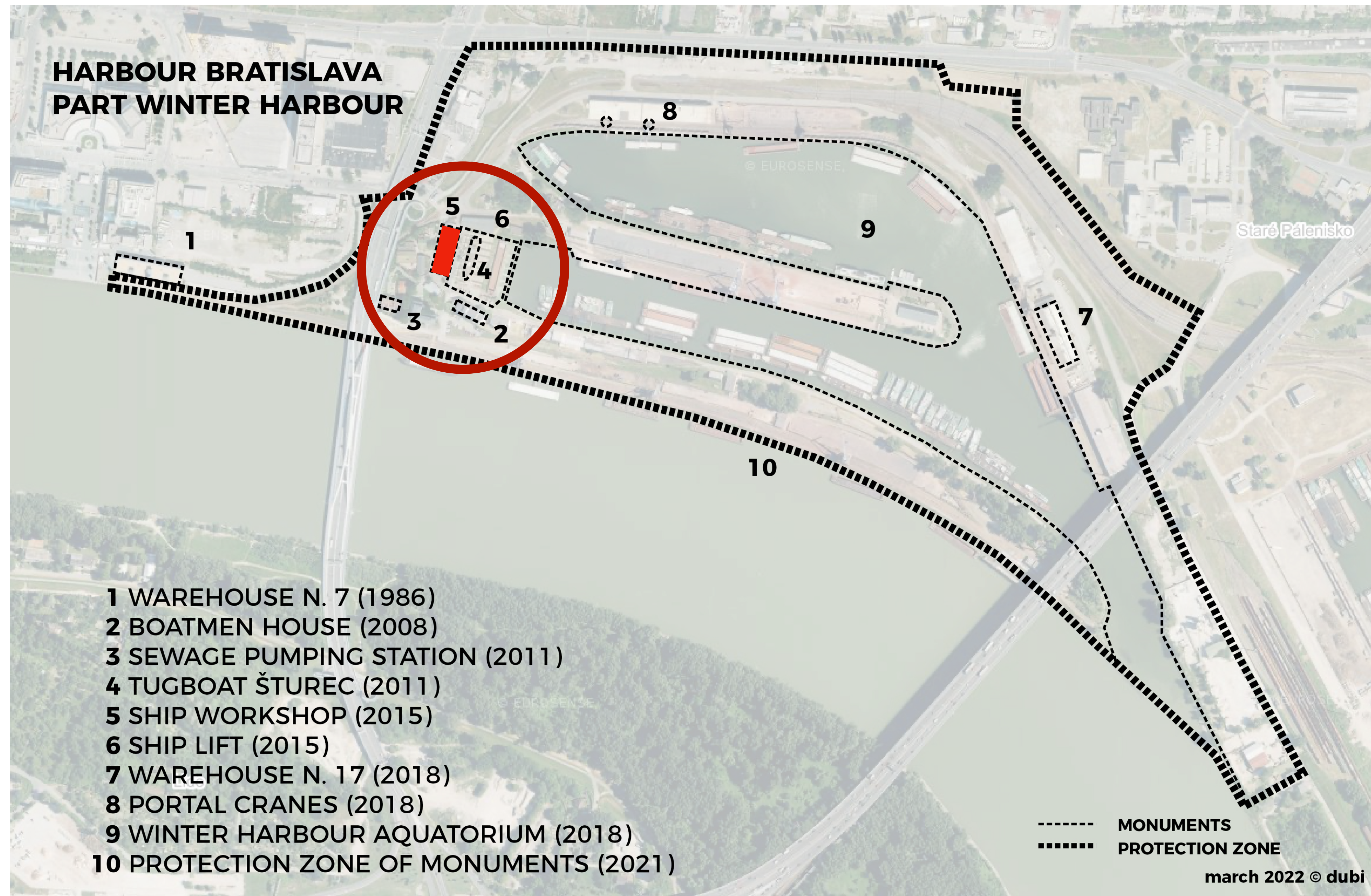


Komárno - Winter Harbour, 1933 [source: archive PÚ SR, Inv. n.: a collection of negatives, MR: the originator: Roth, Inv. č. 62211]



Štúrovo - waterfront of the harbour, around the year 1950 © own collection dubi

# HARBOUR BRATISLAVA PART WINTER HARBOUR





The Ship hall with Ship lift, photo: 1970 © archive J. Mandl



The Ship hall with Ship lift, photo: december 2014 © dubi



The Ship hall with Ship lift, photo: october 2019 © dubi



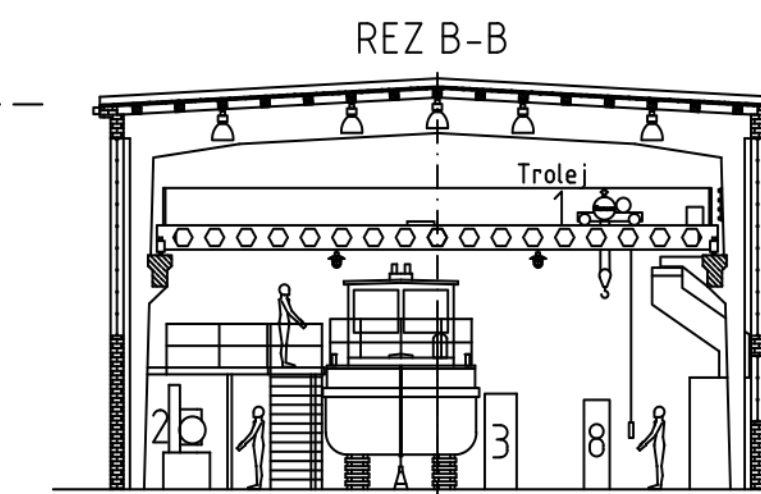
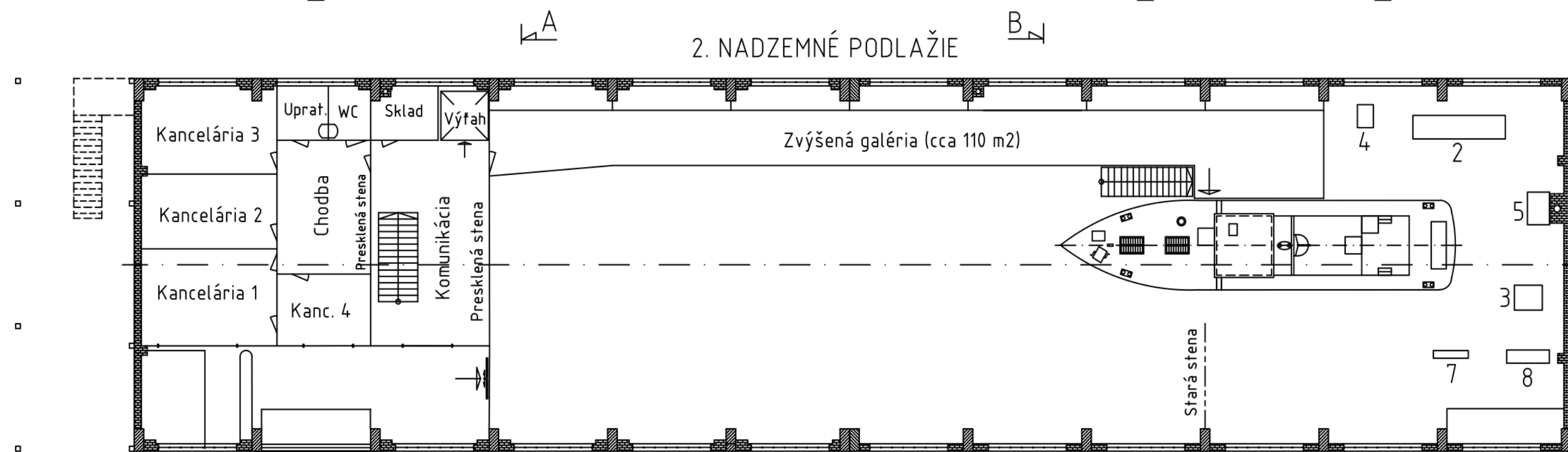
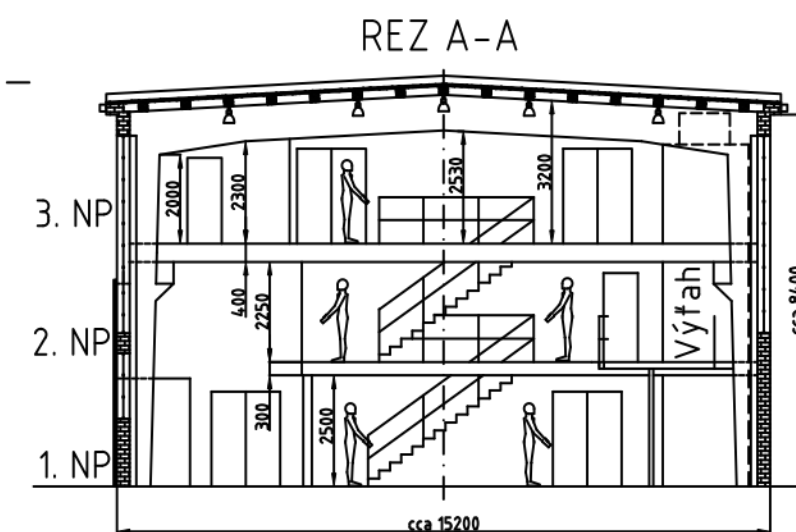
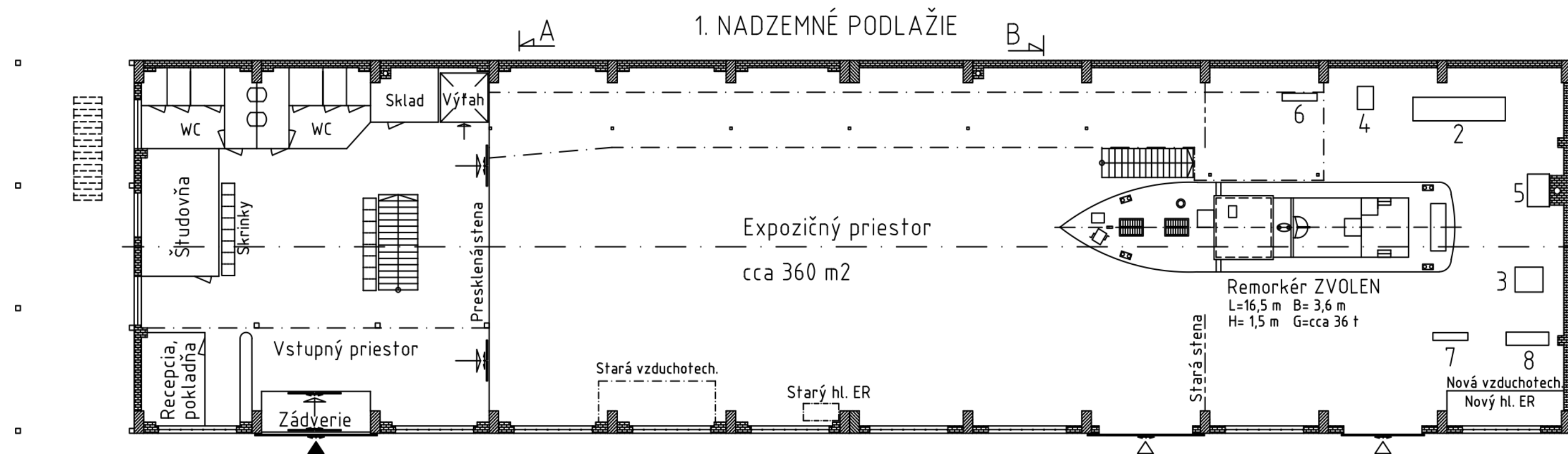




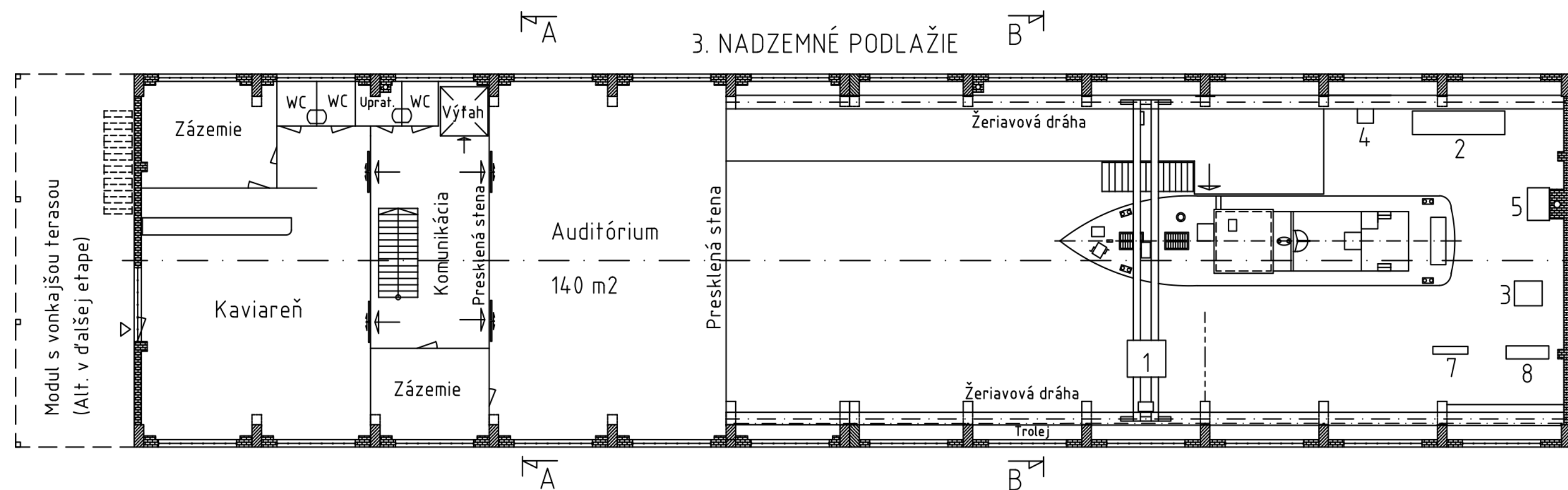
The Ship hall with Ship lift, photo: december 2014 © dubi



# **WORKING PROPOSAL**



- LEGENDA:
- 1 - Mostový žeriav 2,5 t (elektromotor Siemens)
  - 2 - Horizontálna vyvrtávačka (FERRUM A.G.)
  - 3 - Pneumatický buchar
  - 4 - Stĺpová vrtačka
  - 5 - Kováčska vyhňa
  - 6 - Hydraulický lis
  - 7 - Vretenový lis
  - 8 - Kotúčové nožnice (U.S.A.)

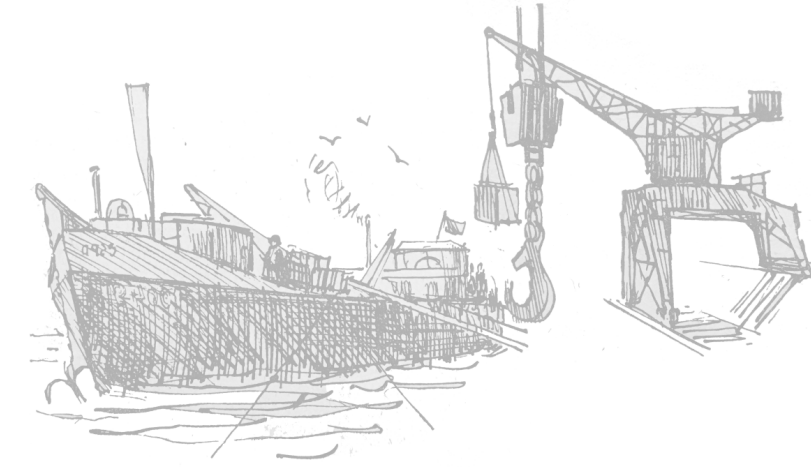


- POZNÁMKA:
- 1) Optimálne v administratívno-komerčnej časti demontovať žeriavové dráhy (po schválení KPÚ).
  - 2) Nové okno na južnej čelnej stene, ktoré je na 3. NP – alt. z terasy vonkajší vstup do kaviarne (po schválení KPÚ).
  - 3) Starú predelovaciu stenu odstrániť.
  - 4) Premiestniť hlavný ER a vzduchotechniku.
  - 5) Pre depozitár a reštaurátorskú dielňu využiť prístavok pri severnej stene haly (výhľadovo).
  - 6) Presvetlenie kancelárie 2 na 2. NP cez chodbu a halu.

MÚZEUM VODNEJ DOPRAVY  
ZIMNÝ PRÍSTAV V BRATISLAVE  
NÁVRH KONVERZIE LODNEJ HALY  
SCHÉMATICKÝ NÁKRES KONCEPCIE  
J. Mandl & M. Dubiny, 04./2023

## PRELIMINARY SCHEDULE

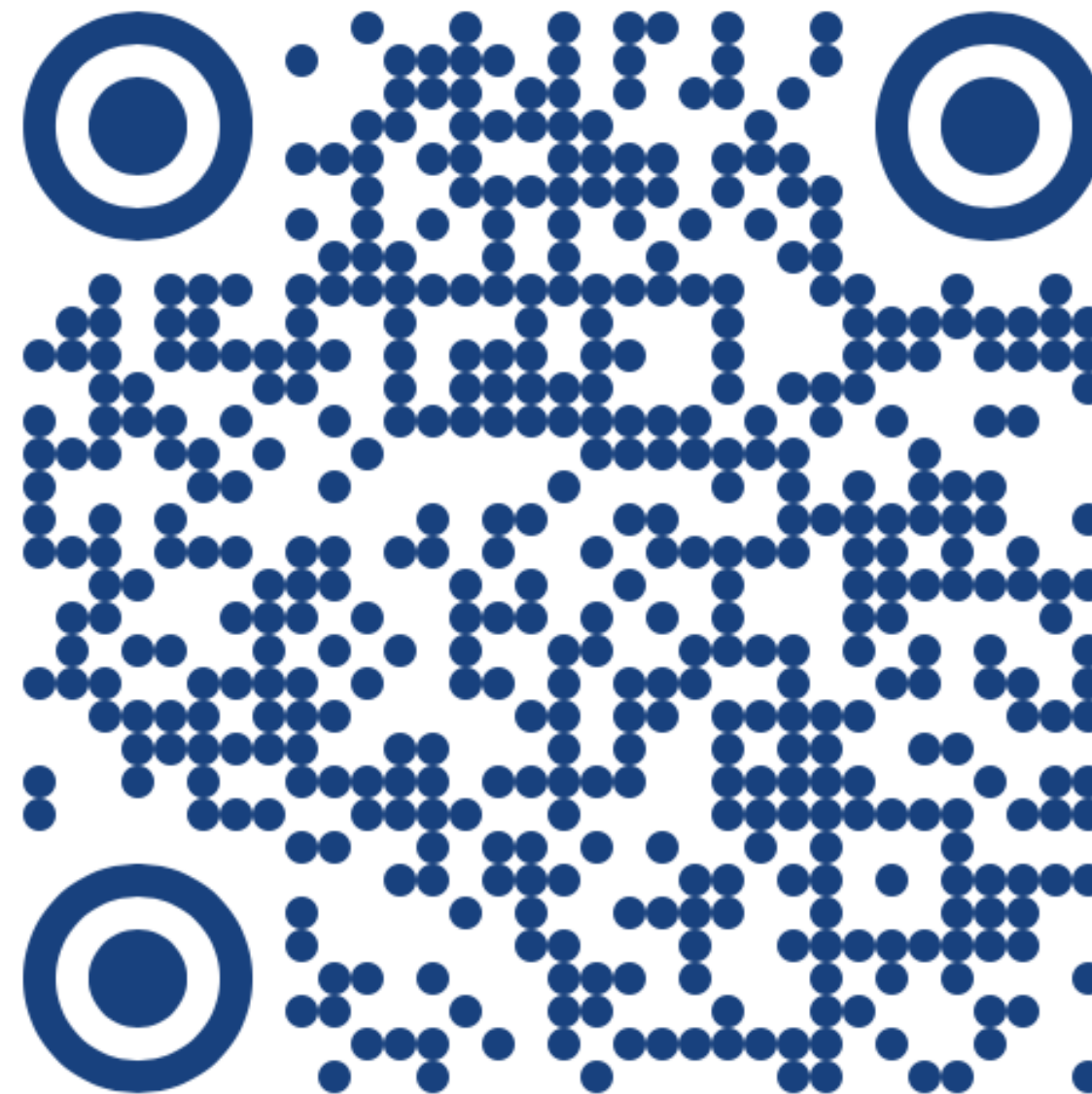
	YEAR	NOTE
<b>INVESTMENT PHASE</b>	2024	PROPERTY-LEGAL RELATIONS + ARCHITECTURAL STUDY + PROJECT DOCUMENTATION
	2025	RECONSTRUCTION OF THE OBJECT
	2026	
	2027	RECONSTRUCTION OF THE OBJECT + PREPARATION PHASE OF THE MUSEUM
<b>OPERATIONAL PHASE</b>	(from) 2028	OPENING AND OPERATION OF THE MUSEUM



**“History by reporting about the past,  
it allows people to judge the present.”**

**- Thomas Jefferson -**

# **CHARTER OF SUPPORT**



Ing. arch. Ing. Martin Dubiny, PhD.

**THANK YOU FOR YOUR ATTENTION**

